

ORNAMENTING WITH IRONWORK

Public Art Sculpture

A case study by Spirit Ironworks, Inc.



Wyandanch Village 11 Park Drive



11 Park Drive rendering shown in "Call for Artists 11 Park Drive Wyandanch Village January 20,2021"

BACCA (Babylon Citizens Council on the Arts, Inc.) partnered with the Albanese Development Corporation to design and install a free-standing outdoor public art sculpture to be featured at a senior living community at 11 Park Drive in Wyandanch, NY. Artists were invited to submit designs for a sculpture to be centered on the paved circular area to enhance the enclosed courtyard.

The sculpture is intended to represent Wyandanch heritage and complement the art installation at the LIRR parking garage as well as the custom Bird Valence Fencing at the residential courtyard fabricated and installed by Spirit Ironworks, Inc. in the Spring of 2022.



Moe Brooker, "Just Jazz" 2015. Photo Source: MTA Arts & Design.

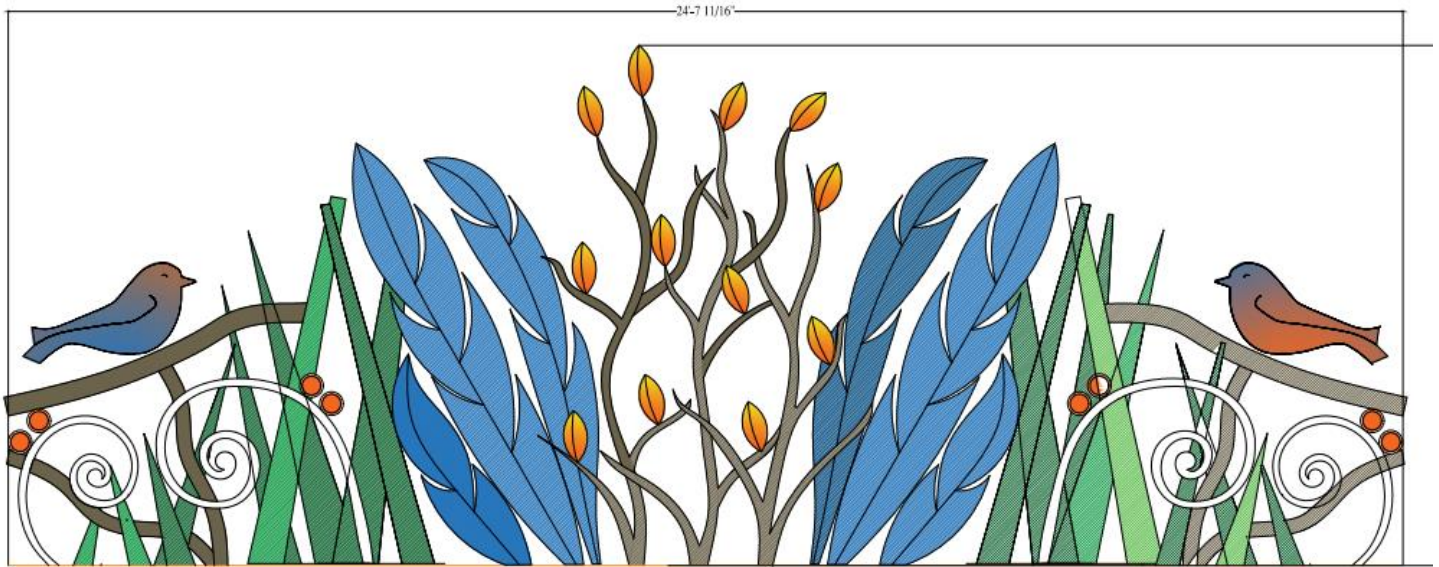
Local artist Salinda Agnes Santiago's design was selected to be fabricated.



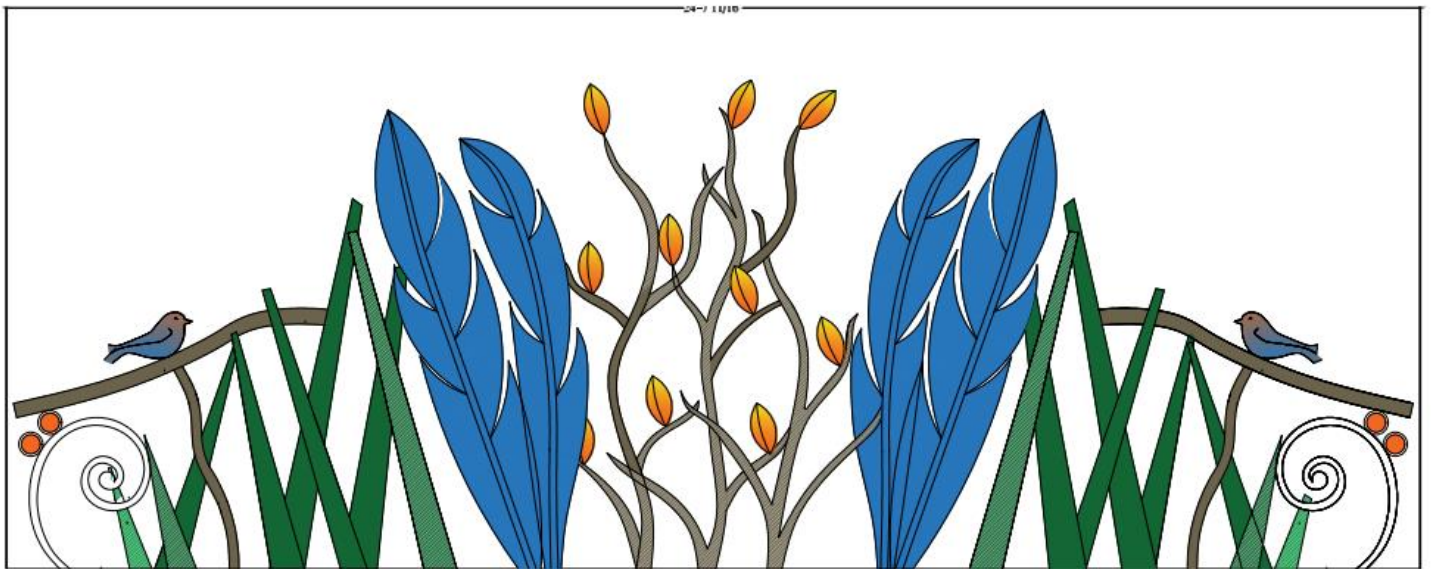
Scroll-shaped musical bass clefs alternate with beach grass, falling sugar maple leaves (New York's State Tree), Eastern Bluebirds perched on branches (New York's State Bird), and grand feathers to honor Chief Wyandanch (the most distinguished of the Montauk sachems who had authority over a confederacy of 13 Long Island tribes).

All images are symbolic of New York, Long Island, and Wyandanch and illustrate the community's heritage.

Spirit Ironworks, Inc. provided a decorative metalwork plan and drawings to take the artist's designs from conceptual to buildable. Budgetary concerns about making 7 separate panels were addressed at this time. Moving to a free standing design of the elements helped cut costs while preserving the concepts.



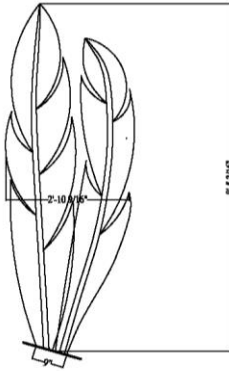
Option 1 BACCA Sculpture 11 Park 2/17/22 Spirit Ironworks



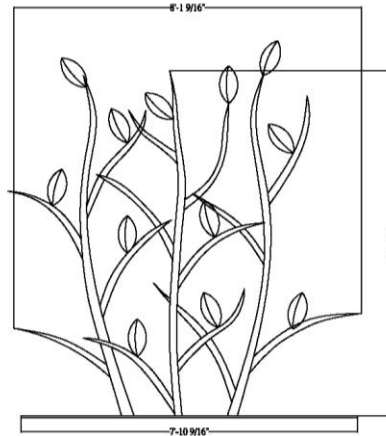
Option 2 BACCA Sculpture 11 Park 2/17/22 Spirit Ironworks

After reviewing the initial options, the client chose to proceed with Option 2.

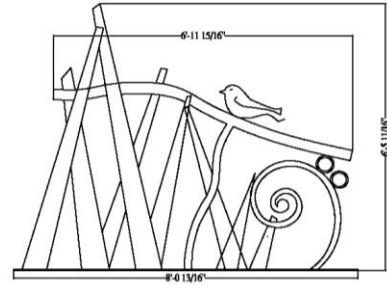
Spirit Ironworks proceeded to produce drawings for fabrication.



Qty.2 in aluminum with stainless steel base painted or powder coated in grey same as bass note clef scroll



Qty.1- painted brown



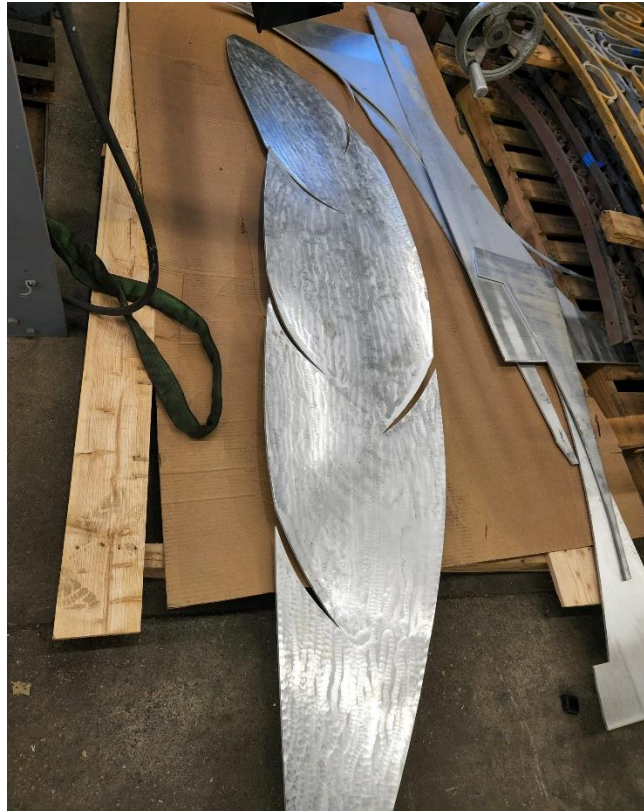
Qty.2 - log is painted brown, grass is green and bass clef note is grey. Bird will be blue. Faux finished will be added to grass and birds.

BREAKDOWN OF INDIVIDUAL SCULPTURE PANELS
****PLEASE NOTE COLORS ARE TO BE DETERMINED

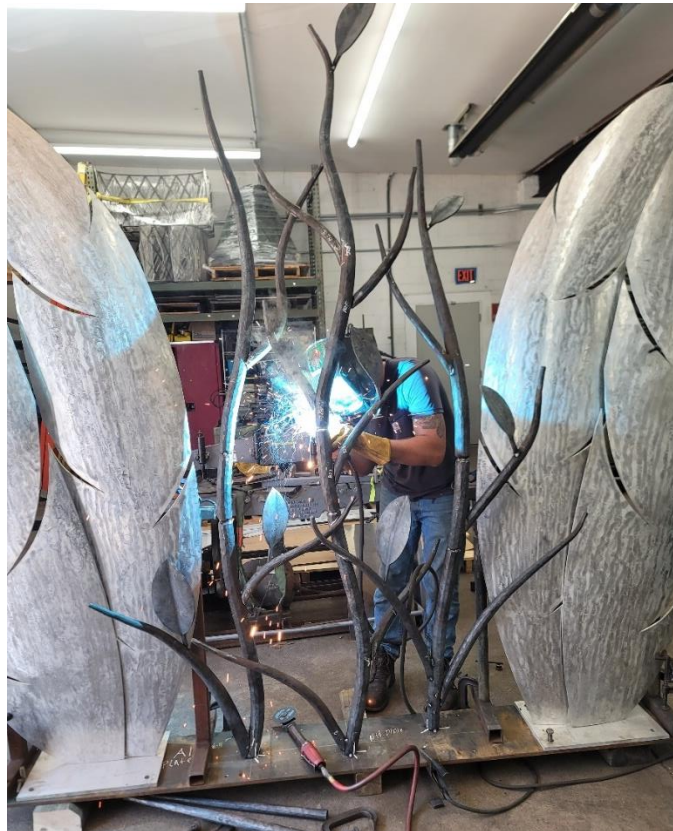
Spirit Ironworks, Inc. then proceeded to forge organic branch shapes from various diameters of solid round bar.



Feathers were formed from Aluminum Plate.



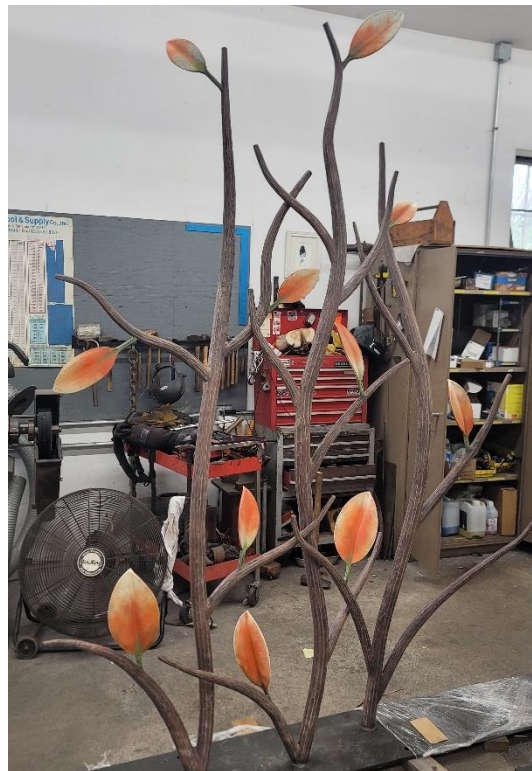
Steel branches and aluminum feathers were welded to base plates.



Blacks and blues were hand applied to the feathers.

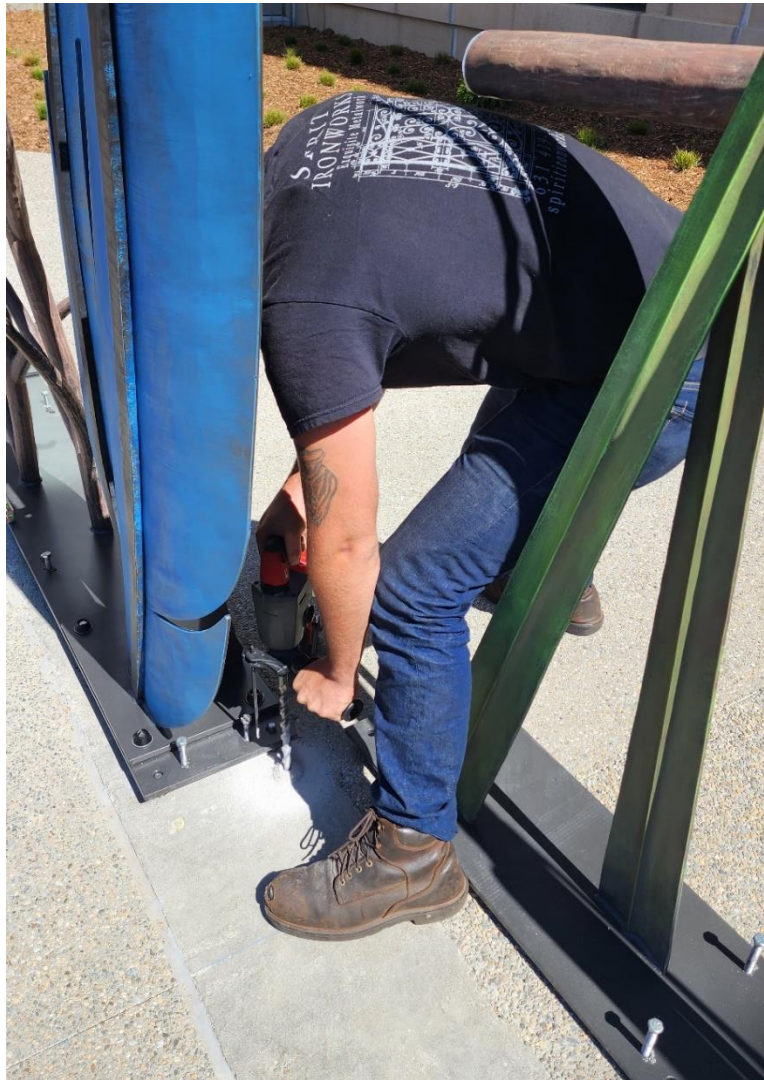


Oranges and yellows were hand painted on the sugar maple leaves.





Setting sculpture in place in center of concrete circle.



Hammer drill is being used to create mounting points for sculpture in concrete footing.



The final bolts being secured into the masonry.



Installation is complete and the sculpture is ready to be enjoyed by the public.